

DRIVE TECHNOLOGY

# INDIVIDUAL PRODUCT SOLUTION

Please contact us for your individual brake.



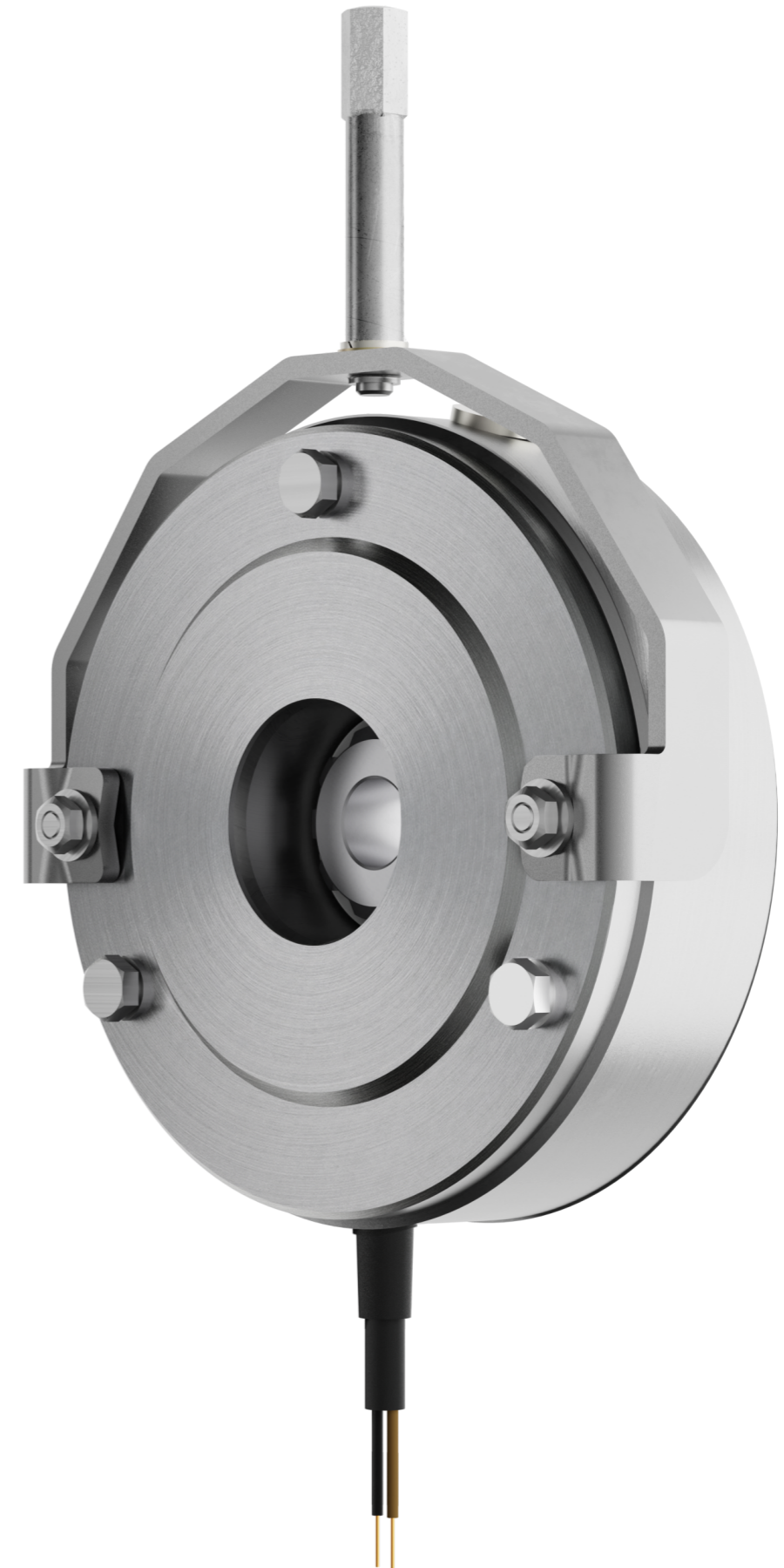
Precision as passion  
Certification according to DIN EN ISO 9001 and 14001

PRECIMA Magnettechnik GmbH  
Röcker Str. 16  
D-31675 Bückeburg  
Tel.: +49 (0) 5722-89332-0  
Fax.: +49 (0) 5722-89332-2  
E-Mail: info@precima.de  
www.precima.de

2024 - v1.01



EN

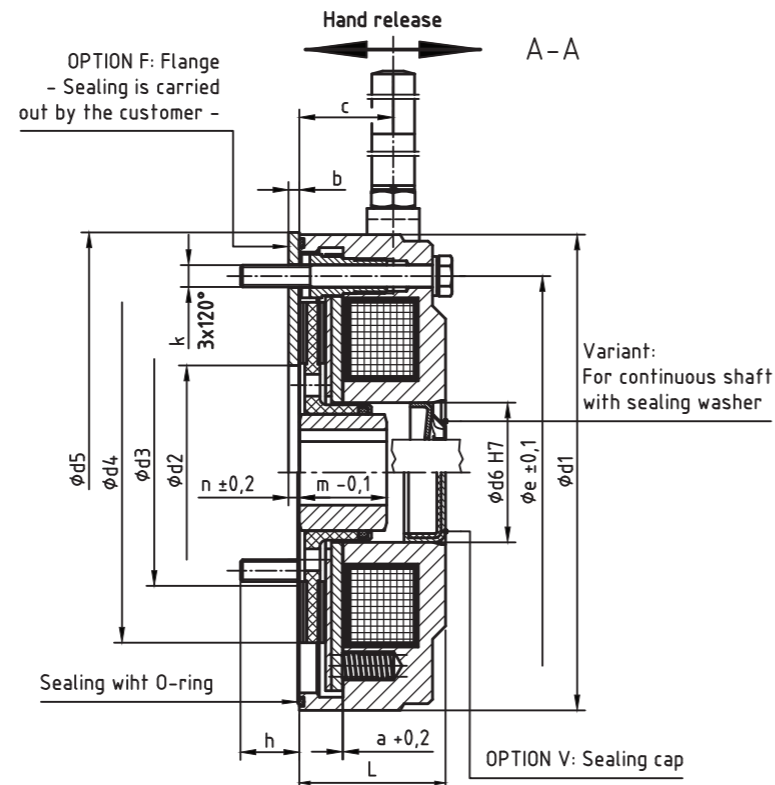
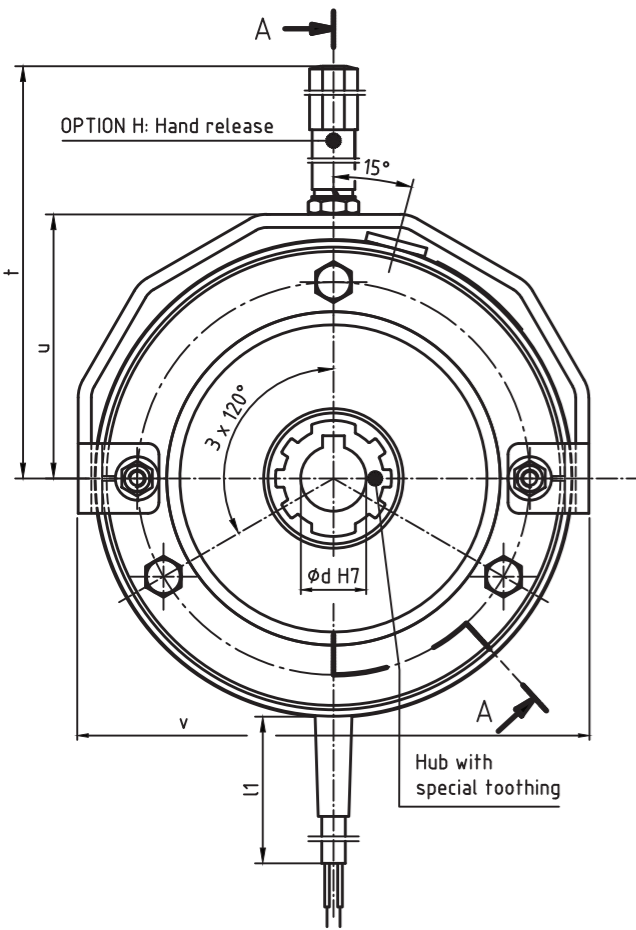


**FDS**  
Spring-applied brake

TECHNICAL DATA



OPTIONS



- Compact holding brake with emergency stop function
- Sealed against external influences
- Protection class IP 65
- Cost-effective and compact design
- Easy to assemble and low maintenance
- Ambient temperature -20°C up to +40°C

- Handrelease (sealed)
- Mounting flange
- Sealing cap
- Z-lamella with continuous shaft
- Customized versions on request



Size	Nominal braking torque MbN [Nm]	P [W] @ 20°C	a	b	c	$\phi d H7$	$\phi d2$	$\phi d3$	$\phi d4$	$\phi d6$	$e \pm 0,1$	L	l1	k	m	n	t	u	v	w
08	3 - 7,5	28	0,2	1,5	18,5	11/12/15*	38	42	62	26	72	26	400 bis 1000	3xM4	18	1,5	103	53	94	6
10	6 - 15	35	0,2	2	20	15/20*	49	50	78	32	90	47,7		3xM5	20	2,0	111	60,5	117	7,7
13	14 - 30	46	0,3	2,5	24,5	20/25	60	62	96	42	112	53,1	400 bis 1500	3xM6	20	2,5	138	76,5	142	10

Changes and errors expected  
 Dimensions in mm, standard keyway according to DIN 6885 / 1-JS9  
 \* Keyway according to DIN 6885 Bl.3